

NOTES:

1. FUSED TERMINAL BLOCKS TO HAVE BLOWN FUSE INDICATIONS

2. A JUMPER BAR IS REQUIRED TO INTERCONNECT ALL FUSED DI TERMINAL BLOCKS.

3. CABLING BETWEEN FUSE AND PLC CARD MUST BE BELDEN PART NUMBER 8619 FOR DIGITAL I/O. BELDEN PART NUMBER 9318 TO BE USED FOR ALL ANALOG I/O FIELD WIRING AND BETWEEN THE TERMINAL BLOCK AND THE PLC CARD.

4. ALL SHIELD TERMINAL BLOCKS TO BE GREEN AND ARE TO BE JUMPED TOGETHER AND TERMINATED TO THE SHIELD GROUNDING BAR.

THESE DRAWINGS ARE TEMPLATE DRAWINGS

1. REMOVE THIS NOTE AS PART OF THE DESIGN PROCESS.

2. MODIFY THIS DRAWING AS DIRECTED IN THE SCADA STANDARDS.

3. ADD ADDITIONAL DETAILS AS REQUIRED TO MEET THE PROJECT SPECIAL REQUIREMENTS.

4. WHEN THE CONSULTANT DEVIATES FROM THIS TEMPLATE THEY ARE REQUIRED TO NOTIFY HALTON REGION THROUGH THE USE OF THE STANDARDS DEVIATION REQD.

5. FUSED TERMINAL BLOCKS AND CIRCUIT BREAKERS TO BE SIZED APPROPRIATELY.

6. SHOW ADDITIONAL RIO RACKS (UP TO A MAXIMUM OF 2) ONLY IF NECESSARY BASED ON DESIGN REQUIREMENTS.

7. THE CONSULTANT IS TO SPECIFY SIGNAL ISOLATORS WHERE REQUIRED. FOLLOW MANUFACTURERS' SPECIFICATIONS FOR GROUNDING OF SHIELDS.

NO Date By

Design --- Ch'kd --- Date

Drawn --- Ch'kd ---

Scale N.T.S. References

Field Notes

Stamp

Regional  
ACCEPTED FOR CONSTRUCTION  
OF REGIONAL INFRASTRUCTURE

REVIEWED FOR COMPLIANCE WITH  
REGIONAL STANDARDS ONLY.

Director, Water & Wastewater Treatment

Manager, Plant Capital & Engineering

Halton  
REGION

TITLE REGIONAL MUNICIPALITY OF HALTON  
CONSULTANT PROJECT TITLE

CONTROLLOGIX DIGITAL INPUT  
TEMPLATE DRAWINGS

Consultant File NO Regional Drawing NO

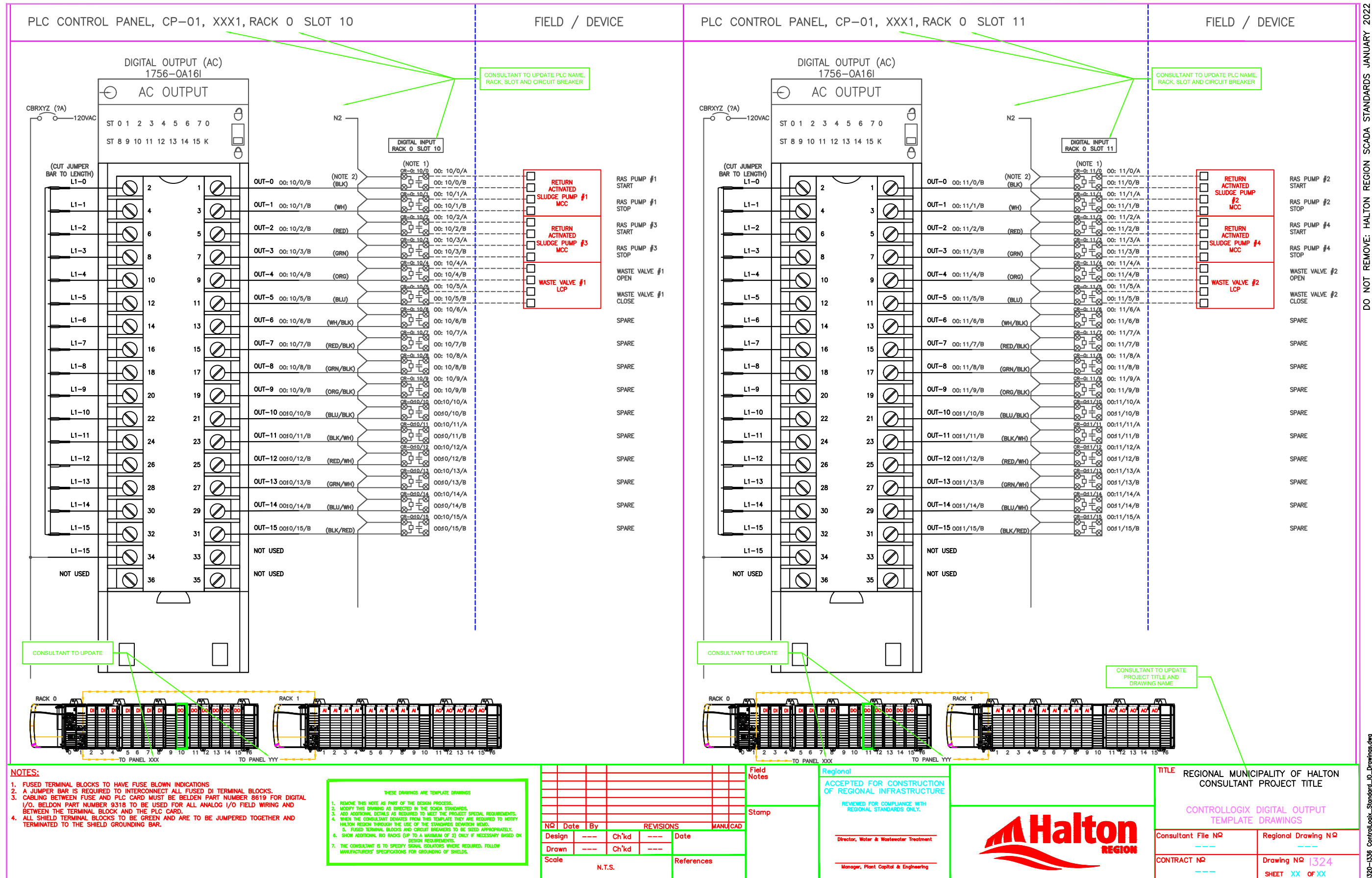
CONTRACT NO Drawing NO 1323

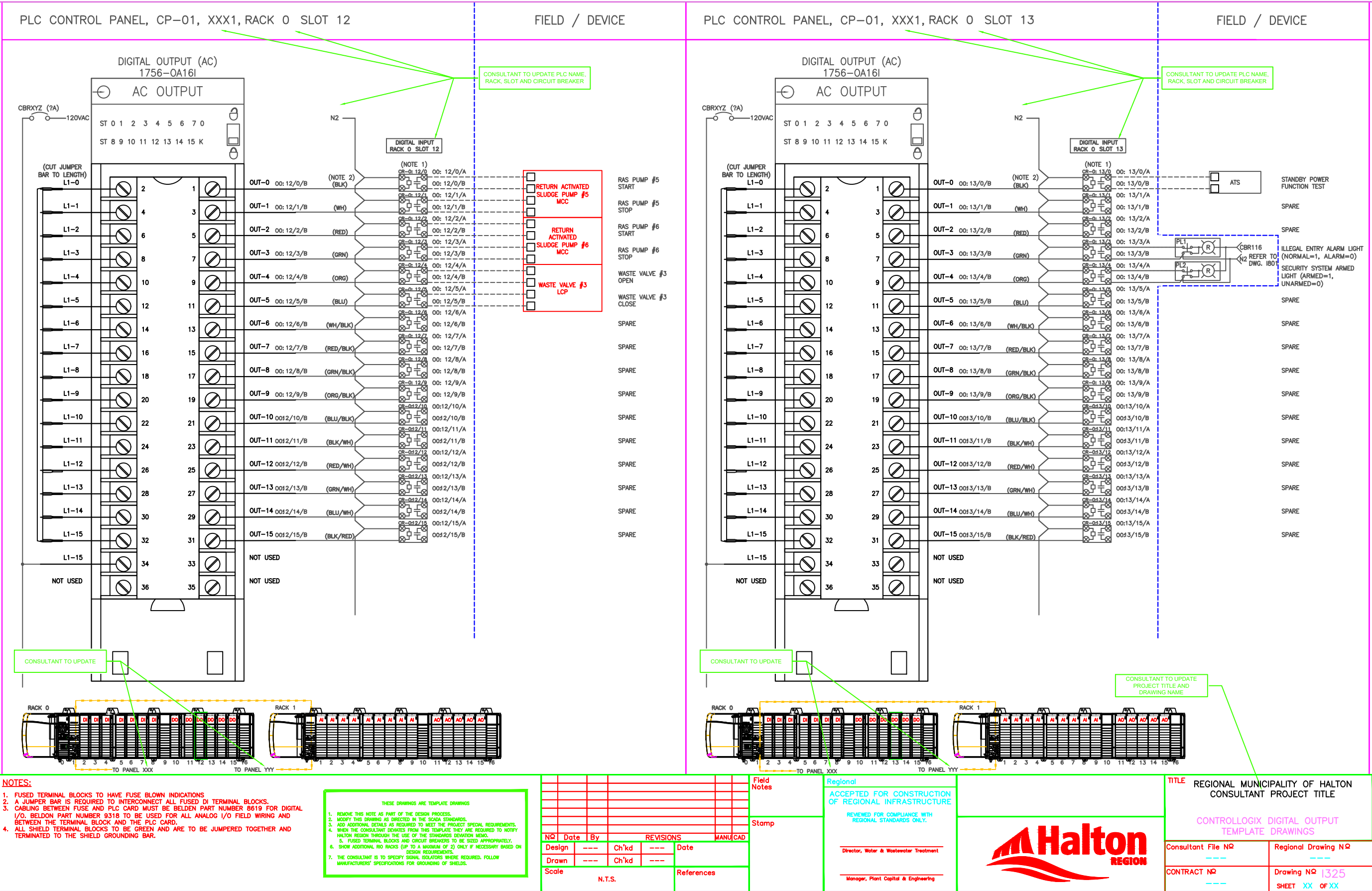
SHEET XX OF XX

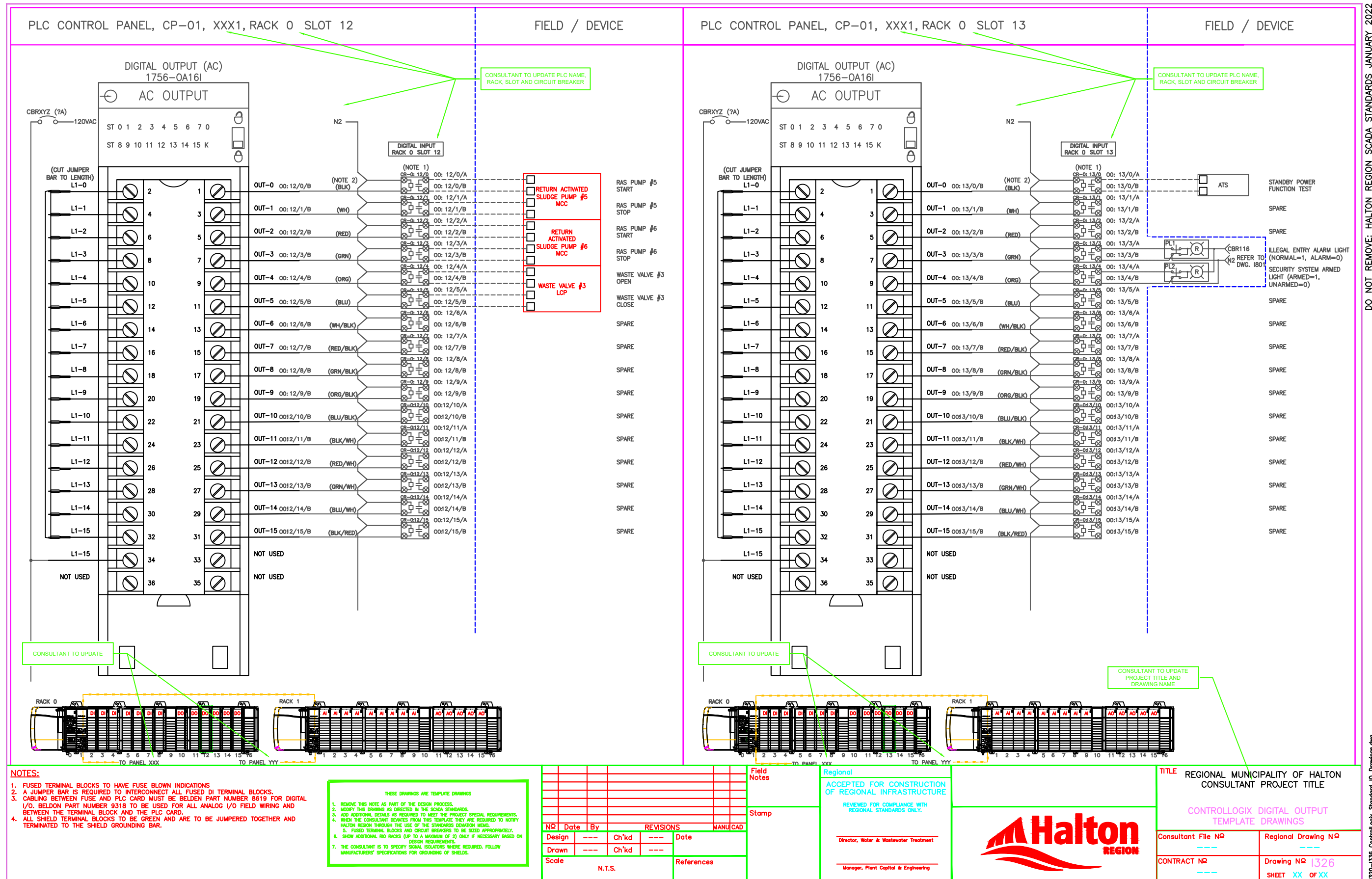
DO NOT REMOVE: HALTON REGION SCADA STANDARDS JANUARY 2022

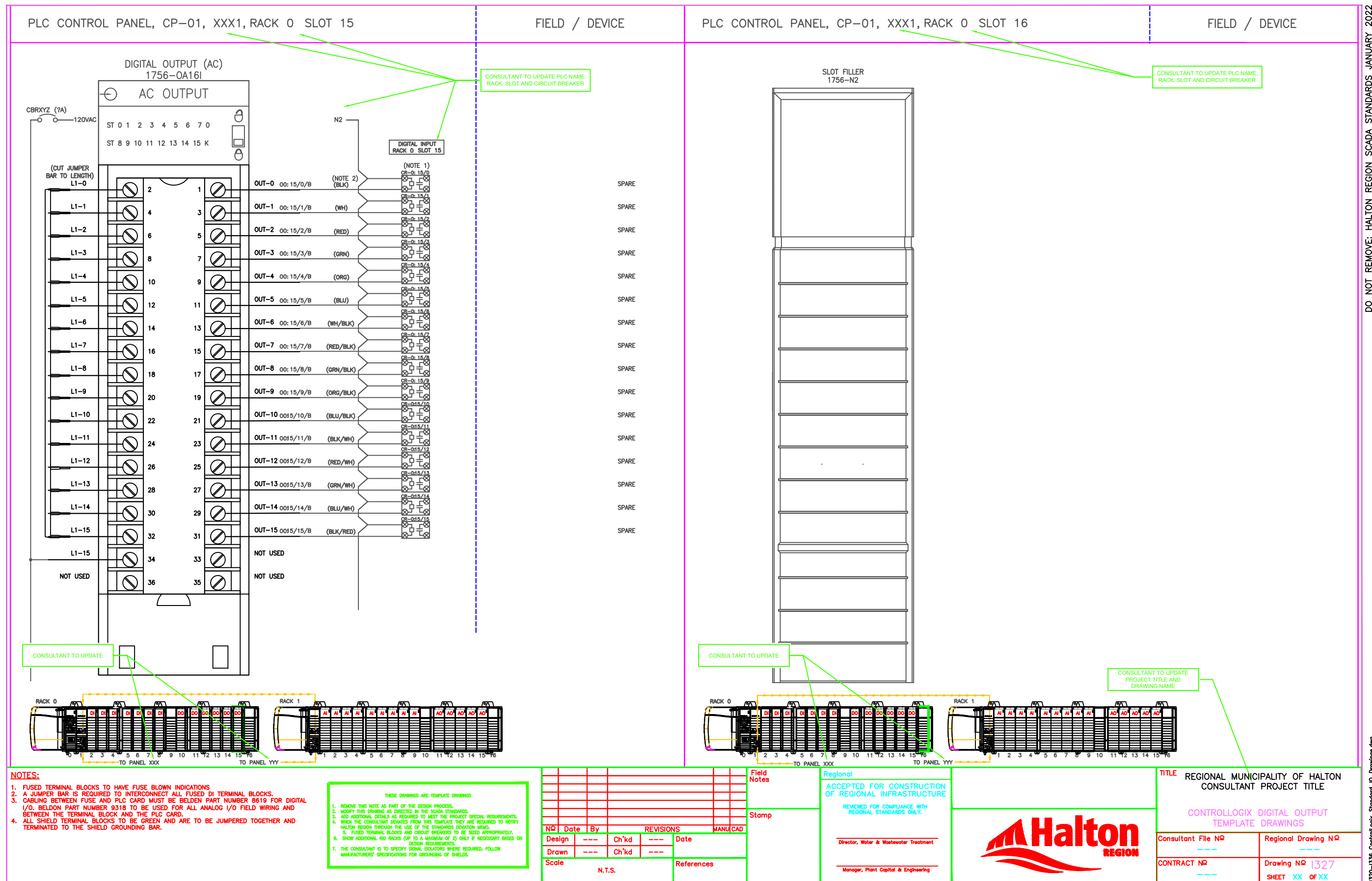
1320-1336 ControlLogix\_Standard\_IO\_Drawings.dwg







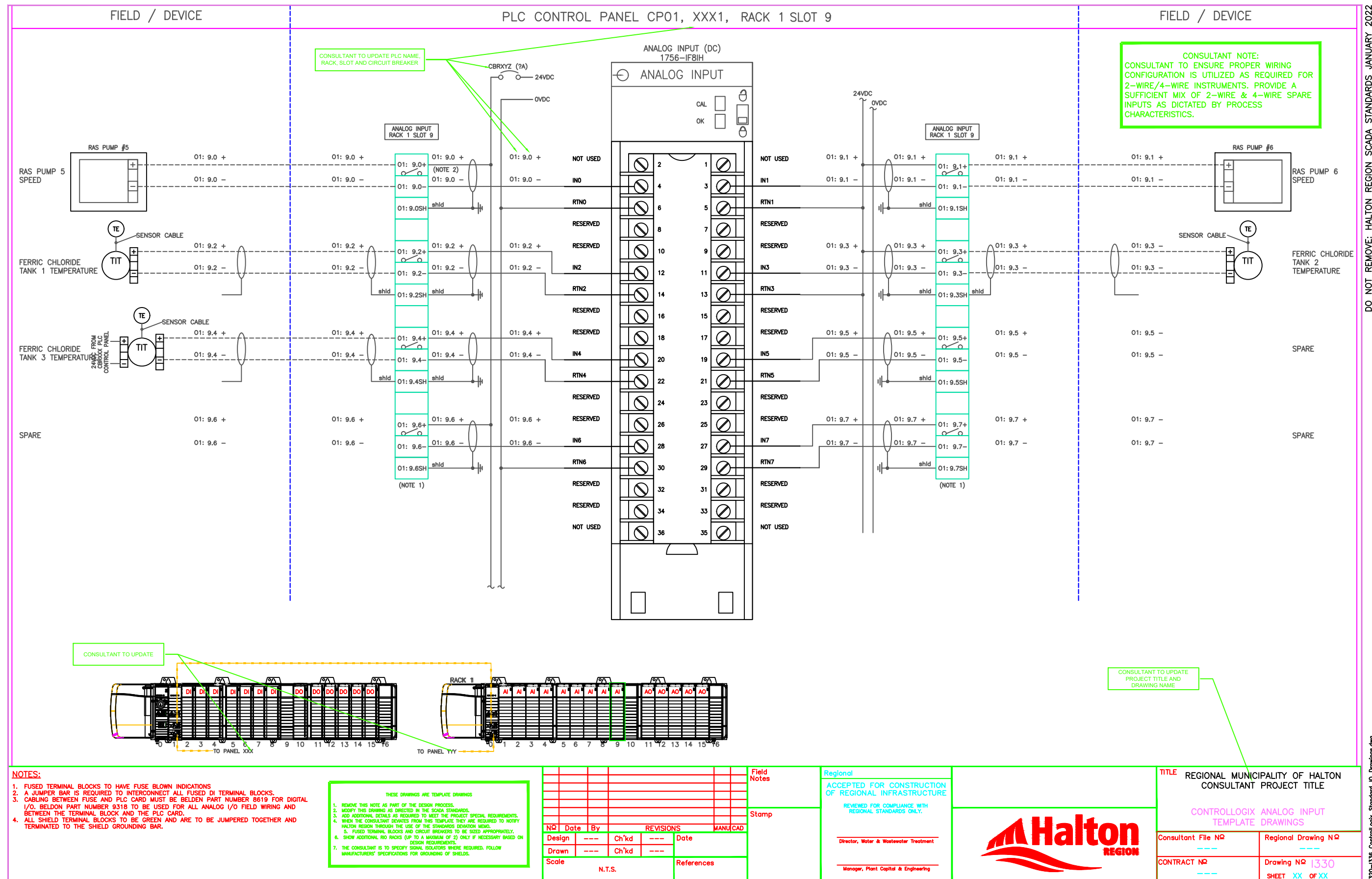


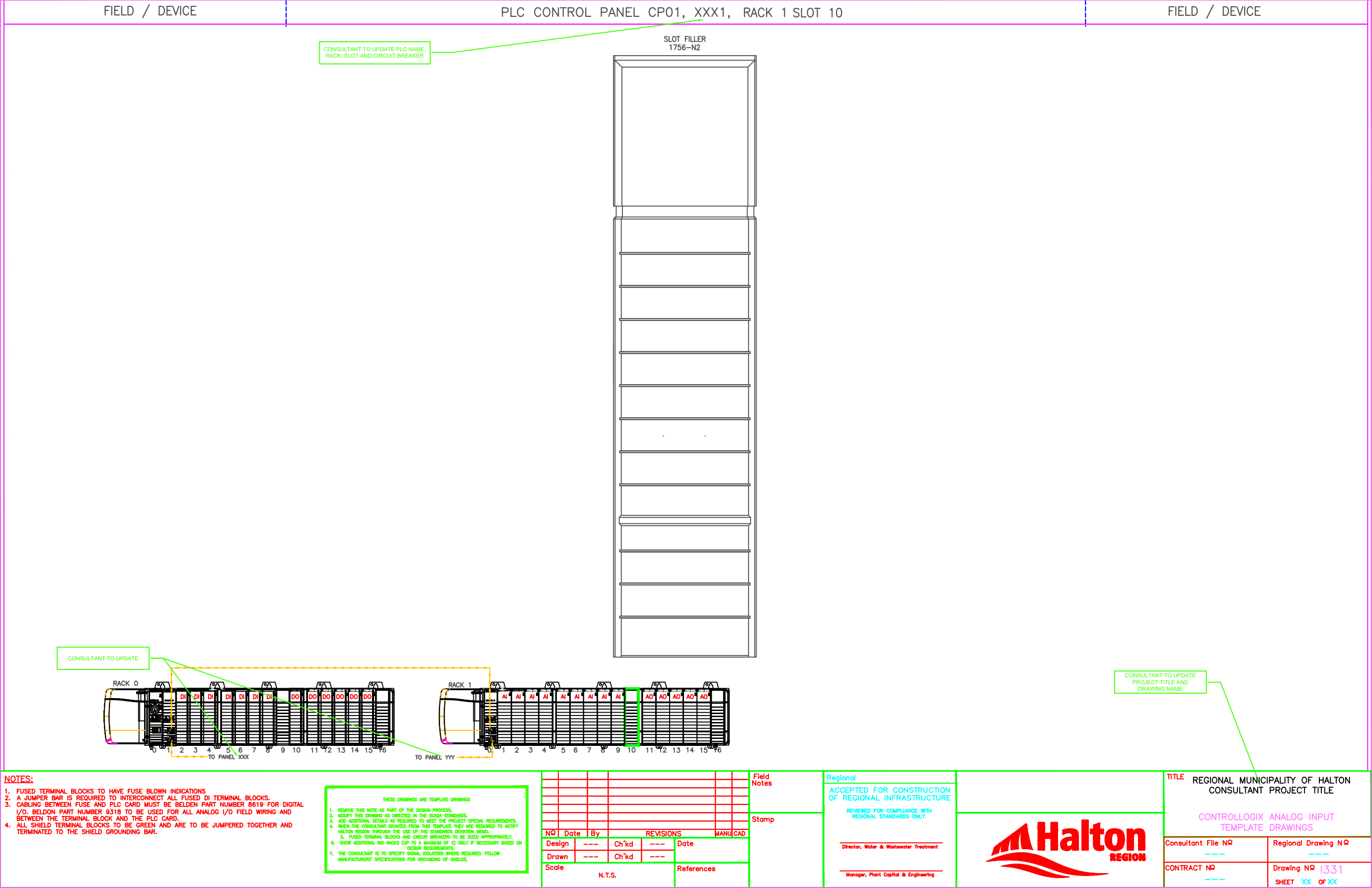




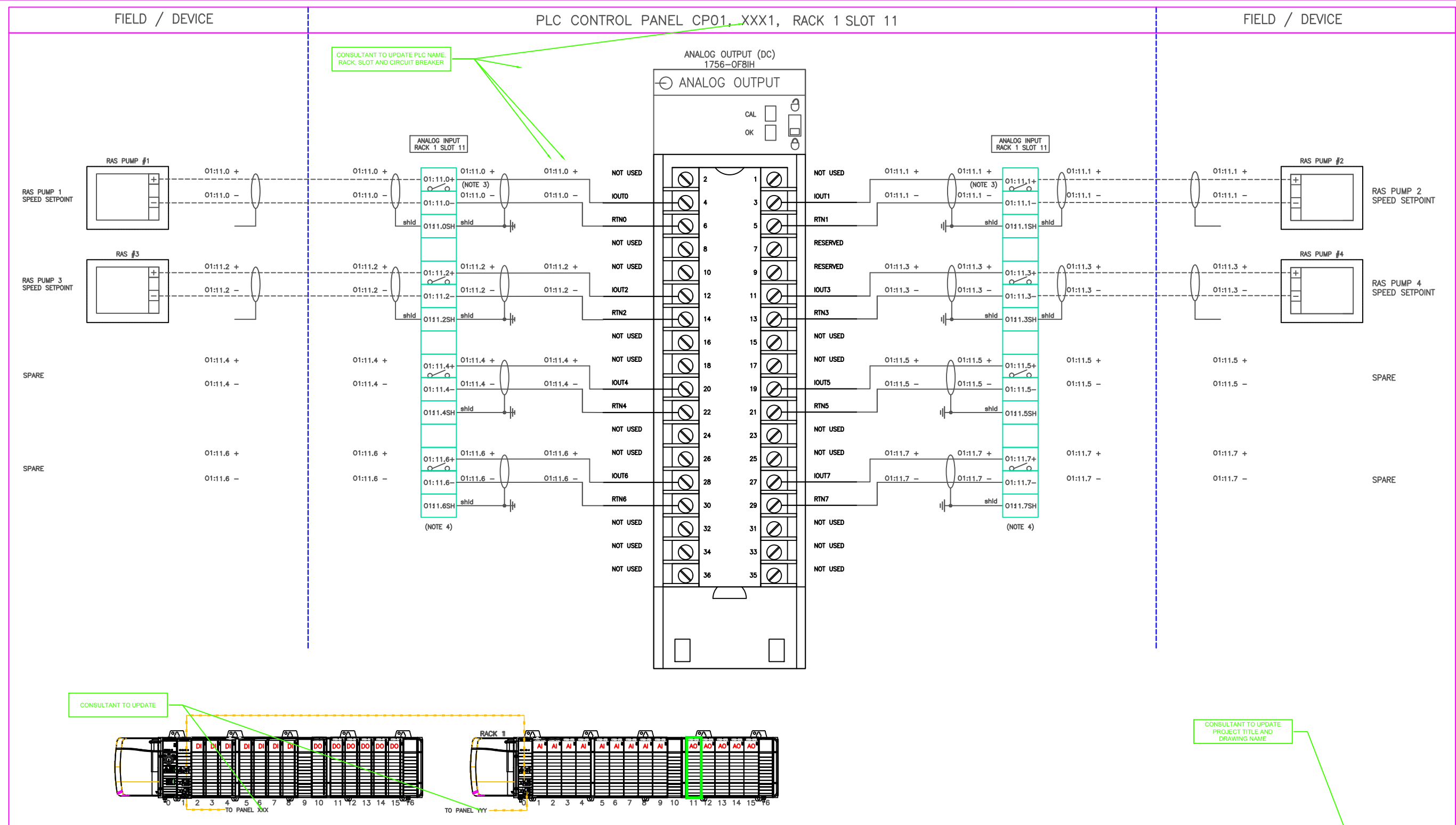












**NOTES:**

- FUSED TERMINAL BLOCKS TO HAVE FUSE BLOWN INDICATIONS.
- A JUMPER BAR IS REQUIRED TO INTERCONNECT ALL FUSED DI TERMINAL BLOCKS.
- CABLING BETWEEN FUSE AND PLC CARD MUST BE BELDEN PART NUMBER 8619 FOR DIGITAL I/O, BELDON PART NUMBER 9318 TO BE USED FOR ALL ANALOG I/O FIELD WIRING AND BETWEEN THE TERMINAL BLOCK AND THE PLC CARD.
- ALL SHIELD TERMINAL BLOCKS TO BE GREEN AND ARE TO BE JUMPERED TOGETHER AND TERMINATED TO THE SHIELD GROUNDING BAR.

THESE DRAWINGS ARE TEMPLATE DRAWINGS

- REMOVE THIS NOTE AS PART OF THE DESIGN PROCESS.
- MODIFY THIS DRAWING AS DIRECTED IN THE SCADA STANDARDS.
- ADD ADDITIONAL DETAILS AS REQUIRED TO MEET THE PROJECT SPECIAL REQUIREMENTS.
- WHEN THE CONSULTANT DEVIATES FROM THIS TEMPLATE THEY ARE REQUIRED TO NOTIFY HALTON REGION THROUGH THE USE OF THE STANDARD DEVIATION MEMO.
- FUSED TERMINAL BLOCKS AND CIRCUIT BREAKERS TO BE SIZED APPROPRIATELY.
- SHOW ADDITIONAL BID RACKS (UP TO A MAXIMUM OF 10) ONLY IF NECESSARY BASED ON DESIGN REQUIREMENTS.
- THE CONSULTANT IS TO SPECIFY SIGNAL ISOLATORS WHERE REQUIRED. FOLLOW MANUFACTURERS' SPECIFICATIONS FOR GROUNDING OF SHIELDS.

NO	Date	By	REVISIONS	MAN/CAD
Design	---	Ch'kd	---	Date
Drawn	---	Ch'kd	---	References
Scale	N.T.S.			

Field Notes

Stamp

Regional

ACCEPTED FOR CONSTRUCTION OF REGIONAL INFRASTRUCTURE

REVIEWED FOR COMPLIANCE WITH REGIONAL STANDARDS ONLY.

Director, Water & Wastewater Treatment

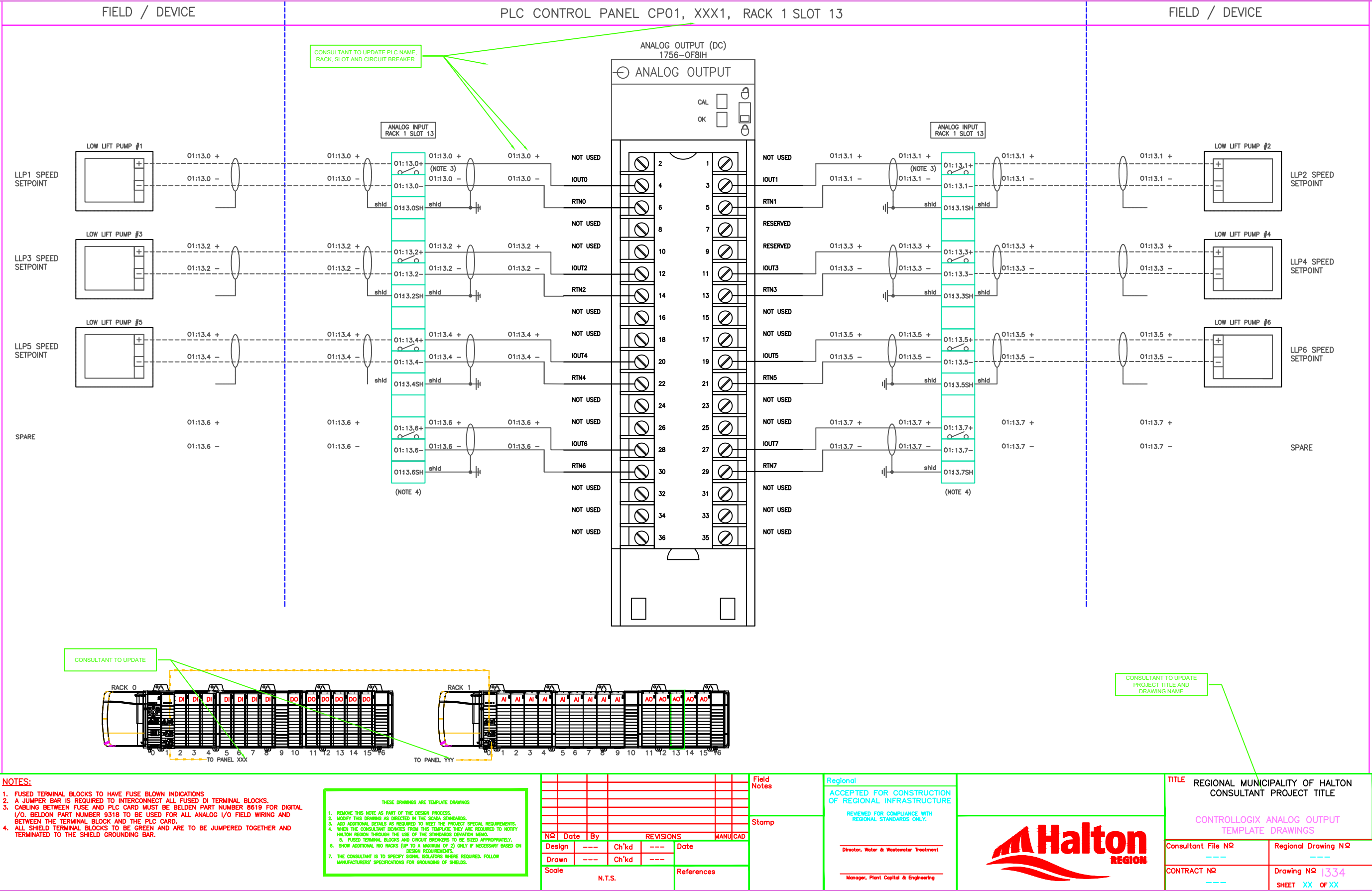
Manager, Plant Capital & Engineering

**TITLE** REGIONAL MUNICIPALITY OF HALTON  
CONSULTANT PROJECT TITLE

CONTROLLOGIX ANALOG OUTPUT  
TEMPLATE DRAWINGS

Consultant File NO	Regional Drawing NO
CONTRACT NO	Drawing NO 1332
	SHEET XX OF XX





CONSULTANT TO UPDATE  
RACK, SLOT AND CIRCUIT BREAKER

CONSULTANT TO UPDATE

CONSULTANT TO UPDATE  
PROJECT TITLE AND  
DRAWING NAME

RACK 0

RACK 1

TO PANEL XXX

TO PANEL YYY

NOTES:

1. FUSED TERMINAL BLOCKS TO HAVE FUSE BLOWN INDICATIONS.  
2. A JUMPER BAR IS REQUIRED TO INTERCONNECT ALL FUSED DI TERMINAL BLOCKS.  
3. CABLING BETWEEN FUSE AND PLC CARD MUST BE BELDEN PART NUMBER 8619 FOR DIGITAL I/O, BELDEN PART NUMBER 9318 TO BE USED FOR ALL ANALOG I/O FIELD WIRING AND BETWEEN THE TERMINAL BLOCK AND THE PLC CARD.  
4. ALL SHIELD TERMINAL BLOCKS TO BE GREEN AND ARE TO BE JUMPERED TOGETHER AND TERMINATED TO THE SHIELD GROUNDING BAR.

THESE DRAWINGS ARE TEMPLATE DRAWINGS  
1. REMOVE THIS NOTE AS PART OF THE DESIGN PROCESS.  
2. MODIFY THIS DRAWING AS DIRECTED IN THE SCADA STANDARDS.  
3. ADD ADDITIONAL DETAILS AS REQUIRED TO MEET THE PROJECT SPECIAL REQUIREMENTS.  
4. WHEN THE CONSULTANT DEVIATES FROM THIS TEMPLATE THEY ARE REQUIRED TO NOTIFY HALTON REGION THROUGH THE USE OF THE STANDARDS DEVIATION MEMO.  
5. FUSED TERMINAL BLOCKS AND CIRCUIT BREAKERS TO BE SIZED APPROPRIATELY.  
6. SHOW ADDITIONAL BID RACKS (UP TO A MAXIMUM OF 10) ONLY IF NECESSARY BASED ON DESIGN REQUIREMENTS.  
7. THE CONSULTANT IS TO SPECIFY SIGNAL ISOLATORS WHERE REQUIRED, FOLLOW MANUFACTURERS' SPECIFICATIONS FOR GROUNDING OF SHIELDS.

NO

Date

By

REVISIONS

MAN/CAD

Design

Ch'kd

Date

Drawn

Ch'kd

Scale

N.T.S.

References

Field Notes

Stamp

Regional

ACCEPTED FOR CONSTRUCTION  
OF REGIONAL INFRASTRUCTURE

REVIEWED FOR COMPLIANCE WITH  
REGIONAL STANDARDS ONLY.

Director, Water & Wastewater Treatment

Manager, Plant Capital & Engineering

Halton  
REGION

TITLE

REGIONAL MUNICIPALITY OF HALTON  
CONSULTANT PROJECT TITLE

CONTROLLOGIX ANALOG OUTPUT  
TEMPLATE DRAWINGS

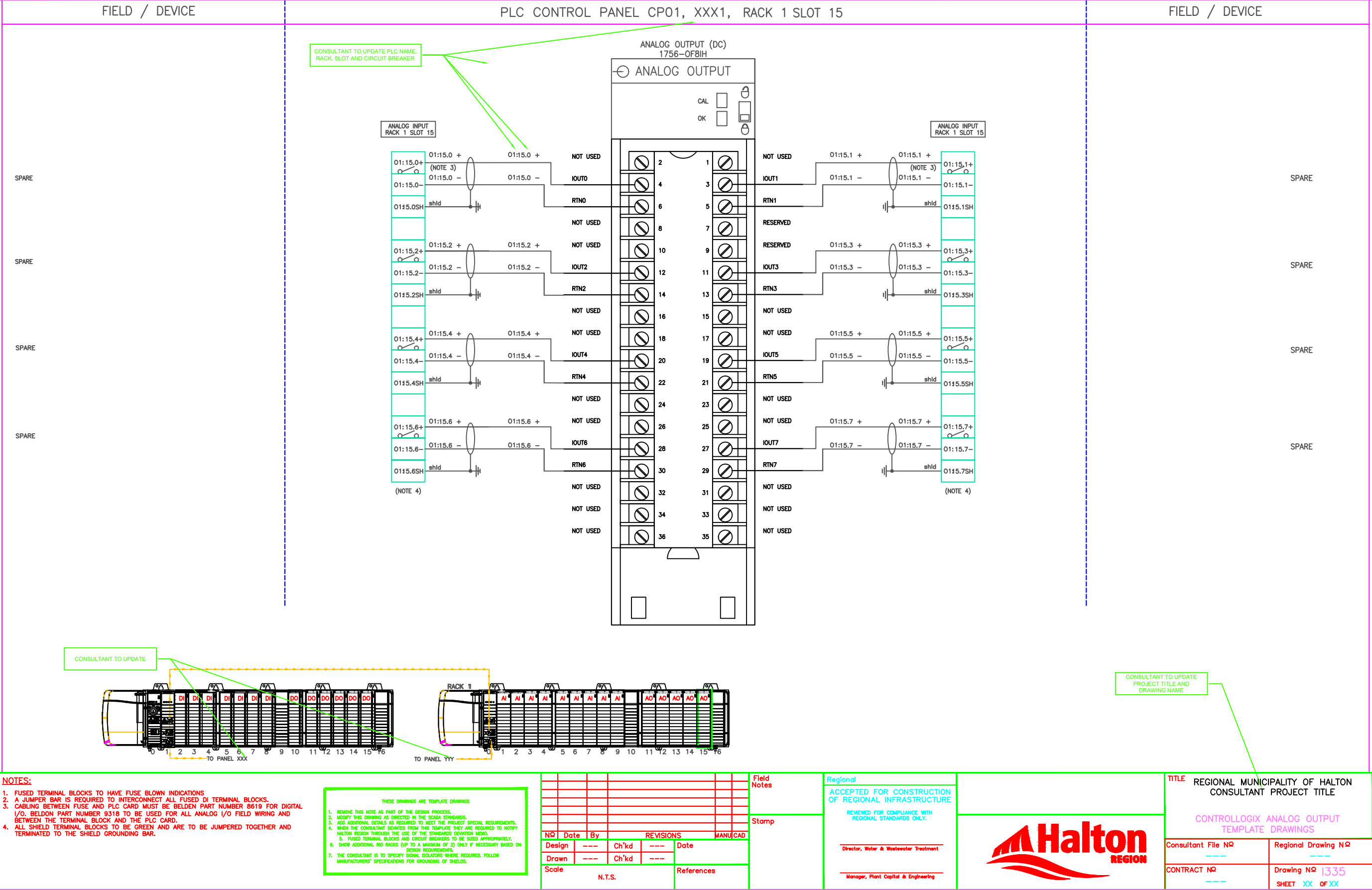
Consultant File NO

Regional Drawing NO

CONTRACT NO

Drawing NO 1334

SHEET XX OF XX





FIELD / DEVICE

PLC CONTROL PANEL CP01, XXX1, RACK 1 SLOT 16

FIELD / DEVICE

CONSULTANT TO UPDATE PLC NAME, RACK, SLOT AND CIRCUIT BREAKER

SLOT FILLER  
1756-N2

CONSULTANT TO UPDATE

RACK 1

DI DI DI DI DI DO DO DO DO DO

TO PANEL XXX

TO PANEL YYY

AI AI AI AI AI AI AI AI AO AO AO AO

CONSULTANT TO UPDATE PROJECT TITLE AND DRAWING NAME

NOTES:

1. FUSED TERMINAL BLOCKS TO HAVE FUSE BLOWN INDICATIONS.

2. A JUMPER BAR IS REQUIRED TO INTERCONNECT ALL FUSED DI TERMINAL BLOCKS.

3. CABLING BETWEEN FUSE AND PLC CARD MUST BE BELDEN PART NUMBER 8619 FOR DIGITAL I/O, BELDEN PART NUMBER 9318 TO BE USED FOR ALL ANALOG I/O FIELD WIRING AND BETWEEN THE TERMINAL BLOCK AND THE PLC CARD.

4. ALL SHIELD TERMINAL BLOCKS TO BE GREEN AND ARE TO BE JUMPERED TOGETHER AND TERMINATED TO THE SHIELD GROUNDING BAR.

THESE DRAWINGS ARE TEMPLATE DRAWINGS

1. REMOVE THIS NOTE AS PART OF THE DESIGN PROCESS.

2. MODIFY THIS DRAWING AS DIRECTED IN THE SCADA STANDARDS.

3. ADD ADDITIONAL DETAILS AS REQUIRED TO MEET THE PROJECT SPECIAL REQUIREMENTS.

4. WHEN THE CONSULTANT DEVIATES FROM THIS TEMPLATE THEY ARE REQUIRED TO NOTIFY HALTON REGION THROUGH THE USE OF THE STANDARDS DEVIATION MEMO.

5. FUSED TERMINAL BLOCKS AND CIRCUIT BREAKERS TO BE SIZED APPROPRIATELY.

6. SHOW ADDITIONAL BID PACKS (UP TO A MAXIMUM OF 10) ONLY IF NECESSARY BASED ON DESIGN REQUIREMENTS.

7. THE CONSULTANT IS TO SPECIFY SIGNAL ISOLATORS WHERE REQUIRED. FOLLOW MANUFACTURERS' SPECIFICATIONS FOR GROUNDING OF SHIELDS.

NO

Date

By

REVISIONS

MAN/CAD

Design

---

Ch'kd

---

Date

Drawn

---

Ch'kd

---

References

Scale

N.T.S.

Field Notes

Stamp

Regional

ACCEPTED FOR CONSTRUCTION OF REGIONAL INFRASTRUCTURE

REVIEWED FOR COMPLIANCE WITH REGIONAL STANDARDS ONLY.

Director, Water & Wastewater Treatment

Manager, Plant Capital & Engineering

Halton REGION

TITLE

REGIONAL MUNICIPALITY OF HALTON CONSULTANT PROJECT TITLE

CONTROLLOGIX ANALOG OUTPUT TEMPLATE DRAWINGS

Consultant File NO

---

Regional Drawing NO

---

CONTRACT NO

---

Drawing NO

1336

SHEET

XX

OF XX